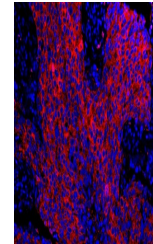


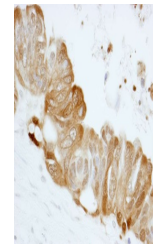
## Product Datasheet

### 14-3-3 Sigma Antibody (orb1518220)

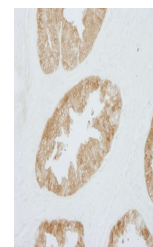
<b>Description</b>	14-3-3 Sigma Antibody
<b>Species/Host</b>	Rabbit
<b>Reactivity</b>	Human
<b>Conjugation</b>	Unconjugated
<b>Tested Applications</b>	IHC
<b>Immunogen</b>	Between 198 and C-terminus
<b>Target</b>	14-3-3 Sigma
<b>Preservatives</b>	Tris-buffered Saline containing 0.1% rAlbumin and 0.09% Sodium Azide
<b>Form/Appearance</b>	Whole IgG
<b>Concentration</b>	50 µg/ml
<b>Storage</b>	2 - 8°C
<b>Note</b>	For research use only
<b>Application notes</b>	Format: Whole IgG
<b>Clonality</b>	Polyclonal
<b>Uniprot ID</b>	<a href="#">P31947</a>
<b>NCBI</b>	<a href="#">NP_006133.1</a>
<b>Hazard Information</b>	Non-Toxic
<b>Dilution Range</b>	IHC - 1:100 - 1:500; IHC-IF - 1:50 - 1:500
<b>Expiration Date</b>	12 months from date of receipt.



Detection of human 14-3-3 Sigma by immunofluorescence.



Detection of human 14-3-3 Sigma by immunohistochemistry.



Detection of human 14-3-3 Sigma by immunohistochemistry.