

## Product Datasheet

### Recombinant human Mesothelin, C-hFc (HEK293) (orb1516381)

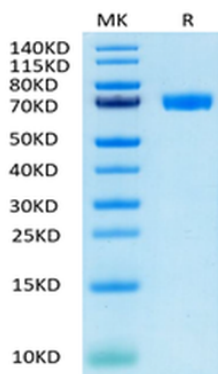
<b>Description</b>	Recombinant human Mesothelin, C-hFc (HEK293)
<b>Endotoxins</b>	< 1.0 EU/μg as determined by LAL
<b>Target</b>	Mesothelin
<b>Concentration</b>	> 0.5 mg/ml
<b>Storage</b>	Stored at -70°C or -20°C. Avoid repeated freeze/thaw cycles.
<b>Tag</b>	C-hFc
<b>Note</b>	For research use only
<b>Application notes</b>	Centrifuge tubes before opening. Reconstituting to a concentration more than 100 μg/ml is recommended. Dissolve the lyophilized protein in distilled water.
<b>Protein Sequence</b>	296-580/630
<b>Purity</b>	> 95% as determined by Tris-Bis PAGE; > 95% as determined by SEC-HPLC
<b>MW</b>	Due to glycosylation, the protein migrates to 68-72 kDa based on Tris-Bis PAGE result. kDa
<b>Expiration Date</b>	6 months from date of receipt.

**Biorbyt Ltd.**

7 Signet Court, Swann's Road,  
Cambridge, CB5 8LA, United Kingdom  
Email: [info@biorbyt.com](mailto:info@biorbyt.com), [support@biorbyt.com](mailto:support@biorbyt.com)  
Phone: [+44 \(0\) 1223 859-353](tel:+44(0)1223859353) | Fax: [+1 \(415\) 651-8558](tel:+1(415)6518558)

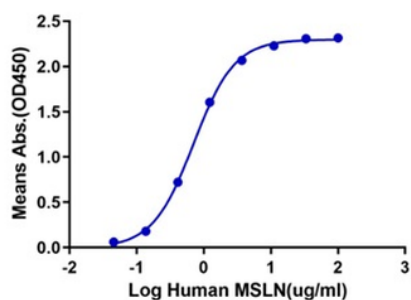
**Biorbyt LLC.**

68 TW Alexander Drive,  
Durham, NC, 27713, United States  
Email: [info@biorbyt.com](mailto:info@biorbyt.com), [support@biorbyt.com](mailto:support@biorbyt.com)  
Phone: [+1 \(415\) 906-5211](tel:+1(415)9065211) | Fax: [+1 \(415\) 651-8558](tel:+1(415)6518558)



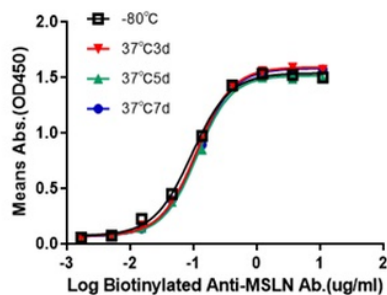
Human Mesothelin/MSLN Protein on Tris-Bis PAGE under reduced conditions. The purity is greater than 95%.

**Human CA125, His Tag ELISA**  
0.5ug Human CA125, His Tag Per Well



Immobilized Human CA125, His Tag at 5 ug/ml (100 ul/Well). Dose response curve for Human MSLN, Fc Tag with the EC50 of 0.7 ug/ml determined by ELISA.

**Human MSLN, Fc Tag ELISA**  
0.05ug Human MSLN, Fc Tag Per Well



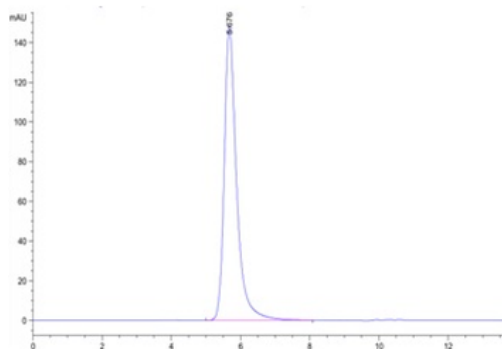
Immobilized Human MSLN, Fc Tag at 0.5 ug/ml (100 ul/Well). Dose response curve for Biotinylated Anti-Human MSLN Ab. with the EC50 of 0.1/0.1/0.1/0.09 ug/ml determined by ELISA.

**Biorbyt Ltd.**

7 Signet Court, Swann's Road,  
Cambridge, CB5 8LA, United Kingdom  
Email: [info@biorbyt.com](mailto:info@biorbyt.com), [support@biorbyt.com](mailto:support@biorbyt.com)  
Phone: [+44 \(0\) 1223 859-353](tel:+44(0)1223859353) | Fax: [+1 \(415\) 651-8558](tel:+1(415)6518558)

**Biorbyt LLC.**

68 TW Alexander Drive,  
Durham, NC, 27713, United States  
Email: [info@biorbyt.com](mailto:info@biorbyt.com), [support@biorbyt.com](mailto:support@biorbyt.com)  
Phone: [+1 \(415\) 906-5211](tel:+1(415)9065211) | Fax: [+1 \(415\) 651-8558](tel:+1(415)6518558)



The purity of Human Mesothelin/MSLN Protein is greater than 95% as determined by SEC-HPLC.

---

**Biorbyt Ltd.**

7 Signet Court, Swann's Road,  
Cambridge, CB5 8LA, United Kingdom

Email: [info@biorbyt.com](mailto:info@biorbyt.com), [support@biorbyt.com](mailto:support@biorbyt.com)

Phone: [+44 \(0\) 1223 859-353](tel:+44(0)1223859353) | Fax: [+1 \(415\) 651-8558](tel:+1(415)6518558)

**Biorbyt LLC.**

68 TW Alexander Drive,  
Durham, NC, 27713, United States

Email: [info@biorbyt.com](mailto:info@biorbyt.com), [support@biorbyt.com](mailto:support@biorbyt.com)

Phone: [+1 \(415\) 906-5211](tel:+1(415)9065211) | Fax: [+1 \(415\) 651-8558](tel:+1(415)6518558)