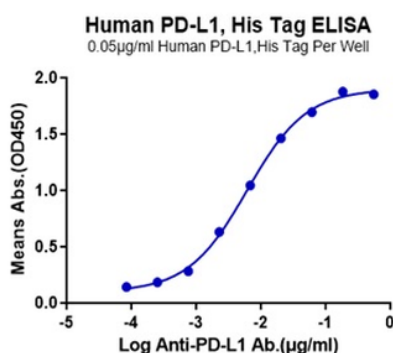


Product Datasheet

Recombinant human PD-L1 protein, C-His (HEK293) (orb1516352)

Description	Recombinant human PD-L1 protein, C-His (HEK293)
Endotoxins	< 1.0 EU/μg as determined by LAL
Target	Programmed cell death 1 ligand 1
Storage	Stored at -70°C or -20°C. Avoid repeated freeze/thaw cycles.
Tag	C-His
Note	For research use only
Application notes	Centrifuge tubes before opening. Reconstituting to a concentration more than 100 μg/ml is recommended. Dissolve the lyophilized protein in distilled water.
Protein Sequence	19-238/290
Purity	> 95% as determined by Tris-Bis PAGE; > 95% as determined by SEC-HPLC
MW	Due to glycosylation, the protein migrates to 35-42 kDa based on Tris-Bis PAGE result. kDa
Expiration Date	6 months from date of receipt.



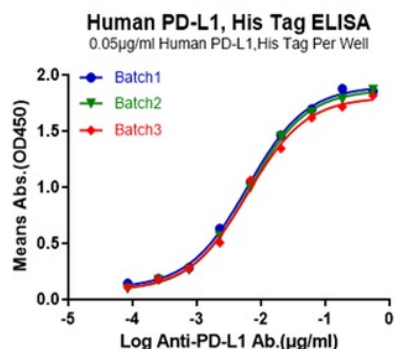
Immobilized Human PD-L1, His Tag at 0.5 μg/ml (100 μl/Well).
Dose response curve for Anti PD-L1 Ab, with the EC₅₀ of 6.1 ng/ml determined by ELISA.

Biorbyt Ltd.

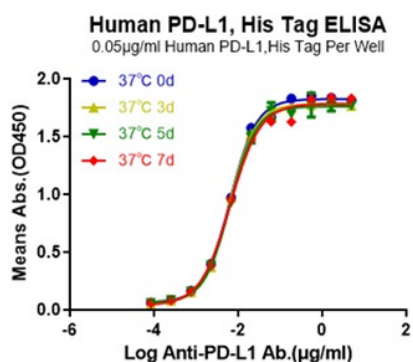
7 Signet Court, Swann's Road,
Cambridge, CB5 8LA, United Kingdom
Email: info@biorbyt.com, support@biorbyt.com
Phone: [+44 \(0\) 1223 859-353](tel:+44(0)1223859353) | Fax: [+1 \(415\) 651-8558](tel:+1(415)6518558)

Biorbyt LLC.

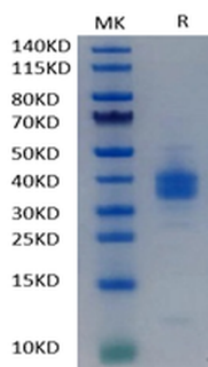
68 TW Alexander Drive,
Durham, NC, 27713, United States
Email: info@biorbyt.com, support@biorbyt.com
Phone: [+1 \(415\) 906-5211](tel:+1(415)9065211) | Fax: [+1 \(415\) 651-8558](tel:+1(415)6518558)



Immobilized Human PD-L1, His Tag at 0.5 µg/ml (100 µl/Well). Dose response curve for Anti-PD-L1 Ab. with the EC50 of 6.1/6.4/6.2 ng/ml determined by ELISA.



Immobilized Human PD-L1, His Tag at 0.5 µg/ml (100 µl/Well). Dose response curve for Anti-PD-L1 Ab. with the EC50 of 6.4/6.4/6.5/6.6 ng/ml determined by ELISA.



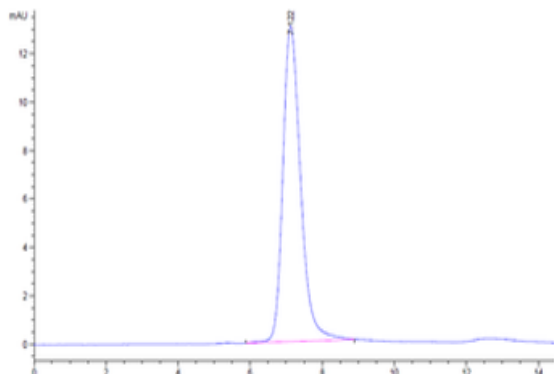
Recombinant PD-L1 on Tris-Bis PAGE under reduced condition. The purity is greater than 95%.

Biorbyt Ltd.

7 Signet Court, Swann's Road,
Cambridge, CB5 8LA, United Kingdom
Email: info@biorbyt.com, support@biorbyt.com
Phone: [+44 \(0\) 1223 859-353](tel:+44(0)1223859353) | Fax: [+1 \(415\) 651-8558](tel:+1(415)6518558)

Biorbyt LLC.

68 TW Alexander Drive,
Durham, NC, 27713, United States
Email: info@biorbyt.com, support@biorbyt.com
Phone: [+1 \(415\) 906-5211](tel:+1(415)9065211) | Fax: [+1 \(415\) 651-8558](tel:+1(415)6518558)



The purity of PD-L1 is greater than 95% as determined by SEC-HPLC.

Biorbyt Ltd.

7 Signet Court, Swann's Road,
Cambridge, CB5 8LA, United Kingdom
Email: info@biorbyt.com, support@biorbyt.com
Phone: [+44 \(0\) 1223 859-353](tel:+44(0)1223859353) | Fax: [+1 \(415\) 651-8558](tel:+1(415)6518558)

Biorbyt LLC.

68 TW Alexander Drive,
Durham, NC, 27713, United States
Email: info@biorbyt.com, support@biorbyt.com
Phone: [+1 \(415\) 906-5211](tel:+1(415)9065211) | Fax: [+1 \(415\) 651-8558](tel:+1(415)6518558)