

## Product Datasheet

### Recombinant human PD-L1 protein, C-mFc (HEK293) (orb1516351)

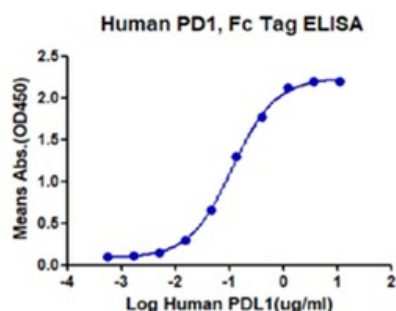
<b>Description</b>	Recombinant human PD-L1 protein, C-mFc (HEK293)
<b>Endotoxins</b>	< 1.0 EU/μg as determined by LAL
<b>Target</b>	Programmed cell death 1 ligand 1
<b>Concentration</b>	> 0.5 mg/ml
<b>Storage</b>	Stored at -70°C or -20°C. Avoid repeated freeze/thaw cycles.
<b>Tag</b>	C-mFc
<b>Note</b>	For research use only
<b>Application notes</b>	Centrifuge tubes before opening. Reconstituting to a concentration more than 100 μg/ml is recommended. Dissolve the lyophilized protein in distilled water.
<b>Protein Sequence</b>	19-238/290
<b>Purity</b>	> 95% as determined by Tris-Bis PAGE; > 95% as determined by SEC-HPLC
<b>MW</b>	Due to glycosylation, the protein migrates to 63-68 kDa based on Tris-Bis PAGE result. kDa
<b>Expiration Date</b>	6 months from date of receipt.

**Biorbyt Ltd.**

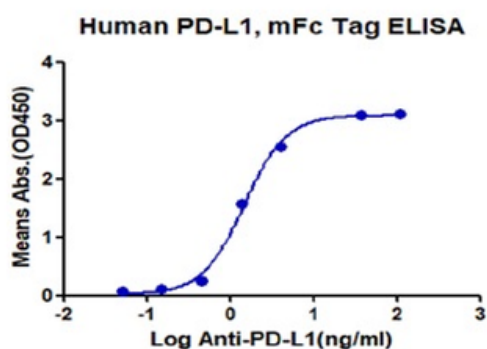
7 Signet Court, Swann's Road,  
Cambridge, CB5 8LA, United Kingdom  
Email: [info@biorbyt.com](mailto:info@biorbyt.com), [support@biorbyt.com](mailto:support@biorbyt.com)  
Phone: [+44 \(0\) 1223 859-353](tel:+44(0)1223859353) | Fax: [+1 \(415\) 651-8558](tel:+1(415)6518558)

**Biorbyt LLC.**

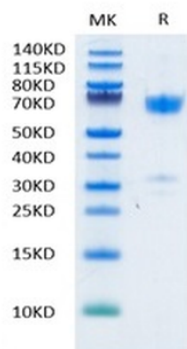
68 TW Alexander Drive,  
Durham, NC, 27713, United States  
Email: [info@biorbyt.com](mailto:info@biorbyt.com), [support@biorbyt.com](mailto:support@biorbyt.com)  
Phone: [+1 \(415\) 906-5211](tel:+1(415)9065211) | Fax: [+1 \(415\) 651-8558](tel:+1(415)6518558)



Immobilized Human PD-1 Fc Tag at 1 ug/ml (100 ul/Well). Dose response curve for PD-L1, mFc Tag with the EC50 of 100 ng/ml determined by ELISA.



Immobilized Human PD-L1 at 0.2 ug/ml (100 ul/Well). Dose response curve for Anti-PD-L1 Ab. with the EC50 of 1.46 ng/ml determined by ELISA.



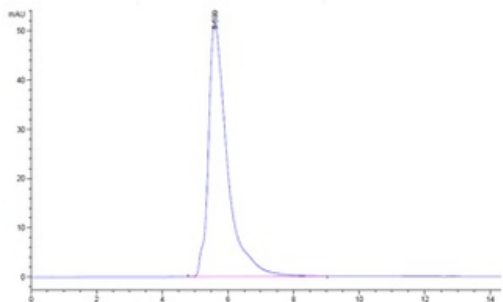
Recombinant PD-L1 on Tris-Bis PAGE under reduced condition. The purity is greater than 95%.

**Biorbyt Ltd.**

7 Signet Court, Swann's Road,  
Cambridge, CB5 8LA, United Kingdom  
Email: [info@biorbyt.com](mailto:info@biorbyt.com), [support@biorbyt.com](mailto:support@biorbyt.com)  
Phone: [+44 \(0\) 1223 859-353](tel:+44(0)1223859353) | Fax: [+1 \(415\) 651-8558](tel:+1(415)6518558)

**Biorbyt LLC.**

68 TW Alexander Drive,  
Durham, NC, 27713, United States  
Email: [info@biorbyt.com](mailto:info@biorbyt.com), [support@biorbyt.com](mailto:support@biorbyt.com)  
Phone: [+1 \(415\) 906-5211](tel:+1(415)9065211) | Fax: [+1 \(415\) 651-8558](tel:+1(415)6518558)



The purity of PD-L1 is greater than 95% as determined by SEC-HPLC.

---

**Biorbyt Ltd.**

7 Signet Court, Swann's Road,  
Cambridge, CB5 8LA, United Kingdom

Email: [info@biorbyt.com](mailto:info@biorbyt.com), [support@biorbyt.com](mailto:support@biorbyt.com)

Phone: [+44 \(0\) 1223 859-353](tel:+44(0)1223859353) | Fax: [+1 \(415\) 651-8558](tel:+1(415)6518558)

**Biorbyt LLC.**

68 TW Alexander Drive,  
Durham, NC, 27713, United States

Email: [info@biorbyt.com](mailto:info@biorbyt.com), [support@biorbyt.com](mailto:support@biorbyt.com)

Phone: [+1 \(415\) 906-5211](tel:+1(415)9065211) | Fax: [+1 \(415\) 651-8558](tel:+1(415)6518558)