
Product Datasheet

LGI1 Antibody (orb150838)

Description

Mouse Anti-Mouse LGI1 Monoclonal IgG2a

Species/Host

Mouse

Reactivity

Human, Mouse, Rat

Conjugation

Unconjugated

Tested Applications

ICC, IHC, WB

Immunogen

Fusion protein amino acids 37-113 (LRRNT domain and first LRR repeat) of mouse LGI1. Rat: 100% identity (77/77 amino acids identical). Human: 98% identity (76/77 amino acids identical). ~50% identity with LGI2, LGI3 and LGI4.

Target

LGI1

Preservatives

PBS pH 7.4, 50% glycerol, 0.1% sodium azide
*Storage buffer may change when conjugated

Concentration

1 mg/ml

Storage

-20°C

Note

For research use only

Application notes

1 µg/ml of SMC-461 was sufficient for detection of LGI1 in 20 µg of rat brain lysate by colorimetric immunoblot analysis using Goat anti-mouse IgG:HRP as the secondary antibody.

Isotype

IgG2a

Clonality

Monoclonal

MW

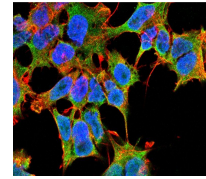
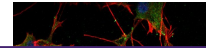
60kDa

Uniprot ID
[Q9JIA1](#)
NCBI
[NP_064674.1](#)
Entrez
[56839](#)
Dilution Range

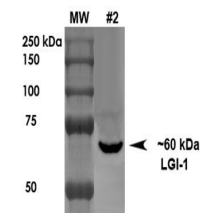
WB (1:1000)

Expiration Date

12 months from date of receipt.



Immunofluorescence analysis of neuroblas...



Western Blot analysis of rat brain membr...