
Product Datasheet

FGF13 Antibody (orb150640)

Description

Mouse Anti-Human FGFA/FHFA (pan) Monoclonal IgG2b

Species/Host

Mouse

Reactivity

Human, Mouse, Rat

Conjugation

Unconjugated

Tested Applications

ICC, IHC, WB

Immunogen

Synthetic peptide amino acids 2-18 (AAAIASSLIRQKRQARE) of human FHF2A. 100% identical to rat, 94% identical to mouse. > 80% identity with FGF12A/FHF1A, FGF14A/FHF4A and FGF11A/FHF3A.

Target

FGF13

Preservatives

PBS pH 7.4, 50% glycerol, 0.1% sodium azide *Storage buffer may change when conjugated

Concentration

1 mg/ml

Storage

-20°C

Note

For research use only

Application notes

1 µg/ml of SMC-448 was sufficient for detection of FGFA/FHFA (pan) in 20 µg of rat brain lysate by colorimetric immunoblot analysis using Goat anti-mouse IgG:HRP as the secondary antibody.

Isotype

IgG2b

Clonality

Monoclonal

MW

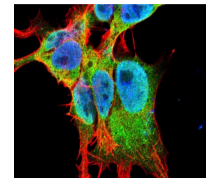
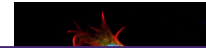
30kDa

Uniprot ID
[Q92913](https://www.uniprot.org/uniprot/Q92913)
NCBI
[AAH34340](https://www.ncbi.nlm.nih.gov/nuccore/AAH34340)
Entrez
[2258](https://www.ncbi.nlm.nih.gov/nuccore/2258)
Dilution Range

WB (1:1000)

Expiration Date

12 months from date of receipt.



Immunofluorescence analysis of neuroblas...

