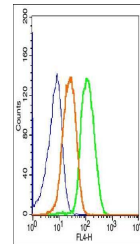


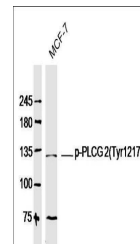
Product Datasheet

PLC gamma 2 (phospho-Tyr1217) antibody (orb15006)

Description	PLC gamma 2 (phospho-Tyr1217) antibody
Species/Host	Rabbit
Reactivity	Human
Conjugation	Unconjugated
Tested Applications	FC
Immunogen	KLH conjugated Synthesised phosphopeptide derived from human PLC gamma 2 around the phosphorylation site of Tyr1217 (FL(p-Y)DT)
Target	Phospho-PLCG 2 (Tyr1217)
Preservatives	0.01M TBS(pH7.4) with 1% rAlbumin, 0.03% Proclin300 and 50% Glycerol.
Form/Appearance	Liquid
Concentration	1mg/ml
Storage	Shipped at 4°C. Store at -20 °C for one year. Avoid repeated freeze/thaw cycles.
Note	For research use only
Isotype	IgG
Clonality	Polyclonal
MW	147 kDa
Uniprot ID	P16885
Dilution Range	Flow-Cyt=1µg /Test, WB=1:500-2000, IHC-P=1:100-500, IHC-F=1:100-500, IF=1:100-500, ELISA=1:5000-10000
Expiration Date	12 months from date of receipt.



Flow cytometric analysis of Hep G2 Cells...



Western blot analysis of MCF-7 Lysate us...