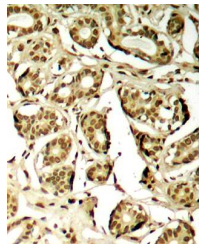


Product Datasheet

MEF2A (Phospho-Ser408) Antibody (orb14978)

Description	MEF2A (Phospho-Ser408) Antibody
Species/Host	Rabbit
Reactivity	Human, Mouse, Rat
Conjugation	Unconjugated
Tested Applications	IHC
Storage	Store at -20°C for long term preservation (recommended). Store at 4°C for short term use.
Note	For research use only
Clonality	Recombinant
Uniprot ID	Q02078
Expiration Date	12 months from date of receipt.



Immunohistochemical analysis of formalin...