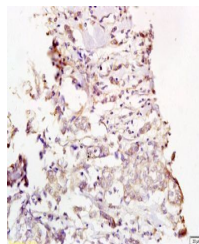


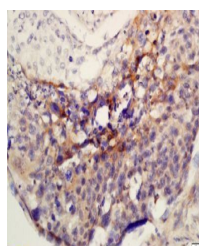
Product Datasheet

MEK1/2 (phospho-Ser218/222) antibody (orb14908)

Description	MEK1/2 (phospho-Ser218/222) antibody
Species/Host	Rabbit
Reactivity	Human
Conjugation	Unconjugated
Tested Applications	ELISA
Immunogen	KLH conjugated Synthesised phosphopeptide derived from human MEK1 around the phosphorylation site of Ser218/222 (ID(p-S)MAN(p-S)FV)
Target	Phospho-MEK1/2 (Ser218 + Ser222)
Preservatives	0.01M TBS(pH7.4) with 1% rAlbumin, 0.03% Proclin300 and 50% Glycerol.
Form/Appearance	Liquid
Concentration	1mg/ml
Storage	Shipped at 4°C. Store at -20 °C for one year. Avoid repeated freeze/thaw cycles.
Note	For research use only
Isotype	IgG
Clonality	Polyclonal
MW	43 kDa
Uniprot ID	P36507
Dilution Range	ELISA=1:5000-10000, WB=1:1000-2000
Expiration Date	12 months from date of receipt.



Immunohistochemical staining of human br...



Immunohistochemical staining of Human la...