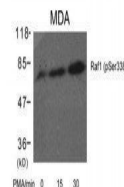


Product Datasheet

Raf1 (Phospho-Ser338) Antibody (orb14907)

Description	Raf1 (Phospho-Ser338) Antibody
Species/Host	Rabbit
Reactivity	Human, Mouse, Rat
Conjugation	Unconjugated
Tested Applications	WB
Storage	Store at -20°C for long term preservation (recommended). Store at 4°C for short term use.
Note	For research use only
Clonality	Recombinant
Uniprot ID	P04049
Expiration Date	12 months from date of receipt.



Western blot of human cell extracts treated...