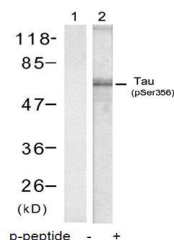


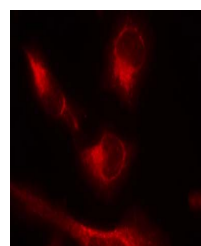
Product Datasheet

Tau (Phospho-Ser356) Antibody (orb14823)

Description	Tau (Phospho-Ser356) Antibody
Species/Host	Rabbit
Reactivity	Human, Mouse, Rat
Conjugation	Unconjugated
Tested Applications	IF, WB
Storage	Store at -20°C for long term preservation (recommended). Store at 4°C for short term use.
Note	For research use only
Clonality	Recombinant
Uniprot ID	P10636
Expiration Date	12 months from date of receipt.



Western blot analysis of extract from ra...



Immunofluorescence staining of methanol-...