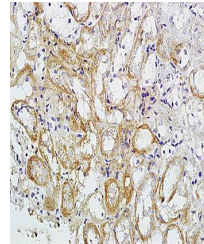


Product Datasheet

VEGFR2 (phospho-Tyr1175) antibody (orb14809)

Description	VEGFR2 (phospho-Tyr1175) antibody
Species/Host	Rabbit
Reactivity	Mouse, Rat
Conjugation	Unconjugated
Tested Applications	FC, WB
Immunogen	KLH conjugated Synthesised phosphopeptide derived from human VEGFR2 around the phosphorylation site of Tyr1175 (KD(p-Y)IV)
Target	phospho-VEGFR2 (Tyr1175)
Preservatives	0.01M TBS(pH7.4) with 1% rAlbumin, 0.03% Proclin300 and 50% Glycerol.
Form/Appearance	Liquid
Concentration	1mg/ml
Storage	Shipped at 4°C. Store at -20 °C for one year. Avoid repeated freeze/thaw cycles.
Note	For research use only
Isotype	IgG
Clonality	Polyclonal
MW	147 kDa
Uniprot ID	P35968
Dilution Range	WB=1:500-2000, Flow-Cyt=2ug/test
Expiration Date	12 months from date of receipt.



Immunohistochemical analysis of formalin...