
Product Datasheet

Acrosin antibody (orb1478)

Description

Acrosin antibody

Species/Host

Rabbit

Reactivity

Human, Rat

Conjugation

Unconjugated

Tested Applications

ICC, IF, IHC-P, WB

Immunogen

KLH conjugated synthetic peptide derived from human Acrosin. Please contact us for the exact immunogen sequence. The peptide is available as orb393925.

Target

Acrosin

Form/Appearance

10 mM PBS, 0.02% sodium azide

Concentration

- 100 µg (in 200 µl): 0.5 mg/ml- 200 µg (in 400 µl): 0.5 mg/ml

Storage

Store at 4°C for up to two weeks. For long term storage, aliquot and store at -20°C, avoid freeze/thaw cycles.

Note

For research use only

Isotype

IgG

Clonality

Polyclonal

Purity

Polyclonal antibodies are purified by peptide affinity chromatography

MW

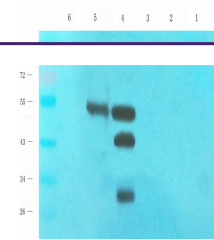
45 kDa

Uniprot ID
[P10323](#), [P29293](#)
NCBI
[001088](#), [001097](#)
Entrez
[49](#)
Dilution Range

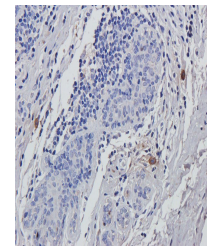
IF/ICC: 1:50-300, IHC-P: 1:50-300, WB: 1:200-1:800

Expiration Date

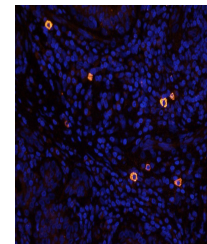
12 months from date of receipt.



WB analysis of rat ovary (lane 1) , mous...



IHC-P image of human breast cancer tissu...



Immunofluorescence analysis of human bre...