

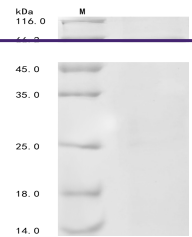
---

## Product Datasheet

### Human NEFL Protein (orb1477678)

**Description**

Recombinant Human Neurofilament light polypeptide(NEFL)


 (Tris-Glycine gel)  
Discontinuous  
SDS-PAG...

**Endotoxins**

Not test.

**Preservatives**

If the delivery form is liquid, the default storage buffer is Tris/PBS-based buffer, 5%-50% glycerol. If the delivery form is lyophilized powder, the buffer before lyophilization is Tris/PBS-based buffer, 6% Trehalose, pH 8.0.

**Form/Appearance**

Liquid: If the delivery form is liquid, the default storage buffer is Tris/PBS-based buffer, 5%-50% glycerol. If the delivery form is lyophilized powder, the buffer before lyophilization is Tris/PBS-based buffer, 6% Trehalose, pH 8.0.

**Storage**

Store at -20°C/-80°C upon receipt, aliquoting is necessary for multiple use. Avoid repeated freeze-thaw cycles.

**Tag**

Tag-Free

**Note**

For research use only

**Application notes**

We recommend that this vial be briefly centrifuged prior to opening to bring the contents to the bottom. Please reconstitute protein in deionized sterile water to a concentration of 0.1-1.0 mg/mL. We recommend to add 5-50% of glycerol (final concentration) and aliquot for long-term storage at -20°C/-80°C. Our default final concentration of glycerol is 50%. Customers could use it as reference.

**Protein Sequence**

```

SSFSYEPYYSTSYKRRYVETPRVHISSVRSYGSTARSAYSSYSAPVSSLSVRRSY
SSSSGSLMPSLENLDLSQVA AISNDLKSIRTQEKAQLQDLNDRFASFIERVHELE
QQNKVLEAELLVLRQKHSEPSRFRALYEQEIRDLRLAAEDATNEKQALQGEREGL
EETLRNLQARYEEVLSREDAEGRLMEARKGADEAALARAEELEKRIDSLMDEISF
LKKVHEEEIAELQAQIQYAQISVEMDVTKPDLAALKDIRAQYEKLAANKMQNAE
EWFKSRFTVLTESAAKNTDAVRAAKDEVSESRLLKAKTLEIACRGMNEALEKQ
LQELEDKQNADISAMQDTINKLENELRTTKSEMARYLKEYQDLLNVKMALDIEIA
AYRKLLEGEETRLSFTSVGSITSGYSQSSQVFGRSAYGGLQTSSYLMSTRSFPSYY
TSHVQEEQIEVEETIEAAKAEAAKDEPPSEGEAEKDEKDEAEAEAEAEAEAAK
EESEEAKEEEEGGEGEGEEETKEAEKKEVEGAGEEQAAKKKD
    
```

**Purity**

Greater than 85% as determined by SDS-PAGE.

**Source**

E.coli

**MW**

61.5 kDa

**Uniprot ID**
[P07196](#)
**Expiration Date**

6 months from date of receipt.