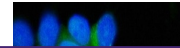

Product Datasheet

**Hsp90 beta/HSP90AB1 Antibody (monoclonal,
7B7F5) (orb1474875)**

Description

Hsp90 beta/HSP90AB1 Antibody (monoclonal, 7B7F5)


Species/Host

Mouse

Reactivity

Human, Mouse, Rat

Conjugation

Unconjugated

Tested Applications

FC, ICC, IF, WB

Immunogen

A synthetic peptide corresponding to a sequence at the C-terminus of human Hsp90 beta (449-481aa RRLSELLRYHTSQSGDEMTSLSEYVSRMKETQK), identical to the related mouse and rat sequences.

Form/Appearance

Lyophilized

Concentration

Adding 0.2 ml of distilled water will yield a concentration of 500 µg/ml.

Storage

At -20°C for one year from date of receipt. After reconstitution, at 4°C for one month. It can also be aliquotted and stored frozen at -20°C for six months. Avoid repeated freezing and thawing.

Note

For research use only

Application notes

Tested Species: In-house tested species with positive results. Other applications have not been tested. Optimal dilutions should be determined by end users. Adding 0.2 ml of distilled water will yield a concentration of 500 µg/ml.

Isotype

IgG2b

Clonality

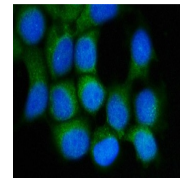
Monoclonal

MW

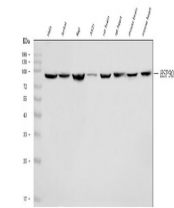
90 kDa

Uniprot ID
P08238
Expiration Date

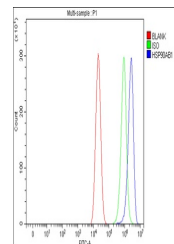
12 months from date of receipt.



IF analysis of Hsp90 beta/HSP90AB1 using...



Western blot analysis of Hsp90 beta/HSP90AB1 using...



Flow Cytometry analysis of CACO-2 cells ...