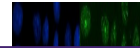

Product Datasheet

**XRCC1 Antibody (monoclonal, 10E10)
(orb1474872)**

Description

XRCC1 Antibody (monoclonal, 10E10)


Species/Host

Mouse

Reactivity

Human

Conjugation

Unconjugated

Tested Applications

FC, ICC, IF, WB

Immunogen

E. coli-derived human XRCC1 recombinant protein (Position: E538-A633).

Form/Appearance

Lyophilized

Concentration

Adding 0.2 ml of distilled water will yield a concentration of 500 µg/ml.

Storage

At -20°C for one year from date of receipt. After reconstitution, at 4°C for one month. It can also be aliquotted and stored frozen at -20°C for six months. Avoid repeated freezing and thawing.

Note

For research use only

Application notes

Tested Species: In-house tested species with positive results. Other applications have not been tested. Optimal dilutions should be determined by end users. Adding 0.2 ml of distilled water will yield a concentration of 500 µg/ml.

Isotype

IgG2b

Clonality

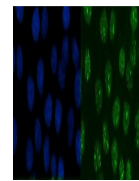
Monoclonal

MW

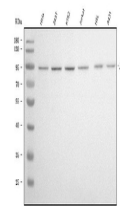
95 kDa

Uniprot ID
P18887
Expiration Date

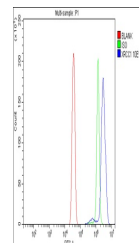
12 months from date of receipt.



IF analysis of XRCC1 using anti-XRCC1 an...



Western blot analysis of XRCC1 using ant...



Flow Cytometry analysis of HeLa cells us...