
Product Datasheet

**KLHL12 Antibody (monoclonal, 2G11D1)
(orb1474868)**

Description

KLHL12 Antibody (monoclonal, 2G11D1)

Species/Host

Mouse

Reactivity

Human, Mouse, Rat

Conjugation

Unconjugated

Tested Applications

IHC, WB

Immunogen

E.coli-derived human KLHL12 recombinant protein (Position: R27-I331).

Form/Appearance

Lyophilized

Concentration

Adding 0.2 ml of distilled water will yield a concentration of 500 µg/ml.

Storage

At -20°C for one year from date of receipt. After reconstitution, at 4°C for one month. It can also be aliquotted and stored frozen at -20°C for six months. Avoid repeated freezing and thawing.

Note

For research use only

Application notes

Tested Species: In-house tested species with positive results. Other applications have not been tested. Optimal dilutions should be determined by end users. Adding 0.2 ml of distilled water will yield a concentration of 500 µg/ml.

Isotype

IgG2a

Clonality

Monoclonal

MW

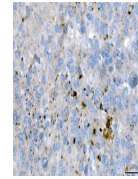
63 kDa

Uniprot ID

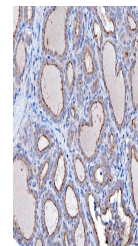
[Q53G59](#)

Expiration Date

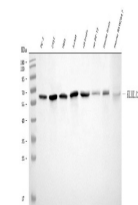
12 months from date of receipt.



IHC analysis of KLHL12 using anti-KLHL12...



IHC analysis of KLHL12 using anti-KLHL12...



Western blot analysis of KLHL12 using an...