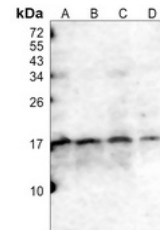


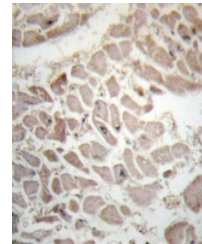
Product Datasheet

CD247 (phospho-Y142) antibody (orb1474763)

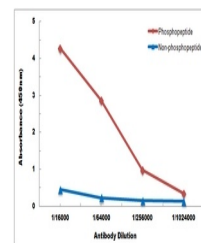
Description	Rabbit polyclonal antibody to CD247 (phospho-Y142)
Species/Host	Rabbit
Reactivity	Human, Mouse
Conjugation	Unconjugated
Tested Applications	IH, WB
Immunogen	KLH-conjugated synthetic phosphopeptide corresponding to residues surrounding Y142 of human CD247 protein. The exact sequence is proprietary.
Target	CD247
Preservatives	Liquid in 0.42% Potassium phosphate, 0.87% Sodium chloride, pH 7.3, 30% glycerol, and 0.01% sodium azide.
Form/Appearance	Liquid in 0.42% Potassium phosphate, 0.87% Sodium chloride, pH 7.3, 30% glycerol, and 0.01% sodium azide.
Storage	Shipped at 4°C. Upon delivery aliquot and store at -20°C for one year. Avoid freeze/thaw cycles.
Note	For research use only
Clonality	Polyclonal
Source	Rabbit
Uniprot ID	P20963, P24161
Entrez	12503, 919
Dilution Range	WB (1/500 - 1/1000), IH (1/50 - 1/200)
Expiration Date	12 months from date of receipt.



Western blot analysis of CD247 (Phospho-...



Immunohistochemical analysis of CD247 (P...



Direct ELISA antibody dose-response curve...