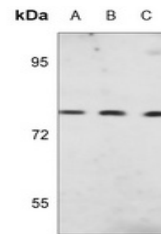


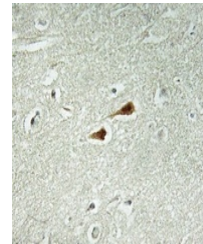
Product Datasheet

JIP1 (phospho-T103) antibody (orb1474758)

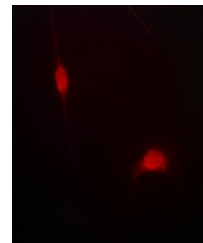
Description	Rabbit polyclonal antibody to JIP1 (phospho-T103)
Species/Host	Rabbit
Reactivity	Human, Mouse, Rat
Conjugation	Unconjugated
Tested Applications	IF, IH, WB
Immunogen	KLH-conjugated synthetic phosphopeptide corresponding to residues surrounding T103 of human JIP1 protein. The exact sequence is proprietary.
Target	MAPK8IP1
Preservatives	Liquid in 0.42% Potassium phosphate, 0.87% Sodium chloride, pH 7.3, 30% glycerol, and 0.01% sodium azide.
Form/Appearance	Liquid in 0.42% Potassium phosphate, 0.87% Sodium chloride, pH 7.3, 30% glycerol, and 0.01% sodium azide.
Storage	Maintain refrigerated at 2-8°C for up to 2 weeks. For long term storage store at -20°C in small aliquots to prevent freeze-thaw cycles.
Note	For research use only
Clonality	Polyclonal
Source	Rabbit
Uniprot ID	Q9UQF2 , Q9WVI9 , Q9R237
Entrez	19099 , 9479 , 116457
Dilution Range	WB (1/500 - 1/1000), IH (1/50 - 1/200), IF/IC (1/50 - 1/200)
Expiration Date	12 months from date of receipt.



Western blot analysis of JIP1 (Phospho-T103)



Immunohistochemical analysis of JIP1 (Phospho-T103)



Immunofluorescent analysis of JIP1 (Phospho-T103)