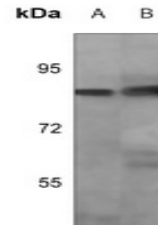


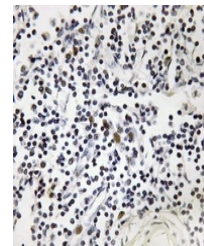
Product Datasheet

OCT1 (phospho-S385) antibody (orb1474754)

Description	Rabbit polyclonal antibody to OCT1 (phospho-S385)
Species/Host	Rabbit
Reactivity	Human, Mouse, Rat
Conjugation	Unconjugated
Tested Applications	IH, WB
Immunogen	KLH-conjugated synthetic phosphopeptide corresponding to residues surrounding S385 of human 45200 protein. The exact sequence is proprietary.
Target	POU2F1
Preservatives	Liquid in 0.42% Potassium phosphate, 0.87% Sodium chloride, pH 7.3, 30% glycerol, and 0.01% sodium azide.
Form/Appearance	Liquid in 0.42% Potassium phosphate, 0.87% Sodium chloride, pH 7.3, 30% glycerol, and 0.01% sodium azide.
Storage	Maintain refrigerated at 2-8°C for up to 2 weeks. For long term storage store at -20°C in small aliquots to prevent freeze-thaw cycles.
Note	For research use only
Clonality	Polyclonal
Source	Rabbit
Uniprot ID	P14859 , P25425 , P31503 , P09086 , Q00196
Entrez	18987 , 5452 , 171068 , 5451 , 18986
Dilution Range	WB (1/500 - 1/1000), IH (1/50 - 1/200)
Expiration Date	12 months from date of receipt.



Western blot analysis of OCT1 (Phospho-S...



Immunohistochemical analysis of OCT1 (Ph...