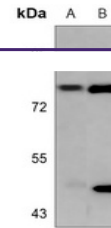

Product Datasheet

PKC gamma (phospho-T655) antibody (orb1474748)

Description

Rabbit polyclonal antibody to PKC gamma



Western blot analysis of PKC gamma (Phos...

Species/Host	Rabbit
Reactivity	Human, Mouse, Rat
Conjugation	Unconjugated
Tested Applications	WB
Immunogen	KLH-conjugated synthetic phosphopeptide corresponding to residues surrounding T655 of human PKC gamma protein. The exact sequence is proprietary.
Target	PRKCG
Preservatives	Liquid in 0.42% Potassium phosphate, 0.87% Sodium chloride, pH 7.3, 30% glycerol, and 0.01% sodium azide.
Form/Appearance	Liquid in 0.42% Potassium phosphate, 0.87% Sodium chloride, pH 7.3, 30% glycerol, and 0.01% sodium azide.
Storage	Maintain refrigerated at 2-8°C for up to 2 weeks. For long term storage store at -20°C in small aliquots to prevent freeze-thaw cycles.
Note	For research use only
Clonality	Polyclonal
Source	Rabbit
Uniprot ID	P05129 , P63318 , P63319
Entrez	24681 , 18752 , 5582
Dilution Range	WB (1/500 - 1/1000)
Expiration Date	12 months from date of receipt.