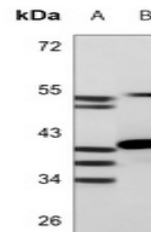


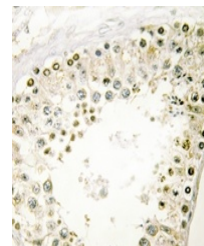
Product Datasheet

HOXA1/B1/D1 antibody (orb1474742)

Description	Rabbit polyclonal antibody to HOXA1/B1/D1
Species/Host	Rabbit
Reactivity	Human, Mouse, Rat
Conjugation	Unconjugated
Tested Applications	IH, WB
Immunogen	KLH-conjugated synthetic peptide encompassing a sequence within the C-term region of human HOXA1/B1/D1. The exact sequence is proprietary.
Target	HOXA1; HOXB1; HOXD1
Preservatives	Liquid in 0.42% Potassium phosphate, 0.87% Sodium chloride, pH 7.3, 30% glycerol, and 0.01% sodium azide.
Form/Appearance	Liquid in 0.42% Potassium phosphate, 0.87% Sodium chloride, pH 7.3, 30% glycerol, and 0.01% sodium azide.
Storage	Maintain refrigerated at 2-8°C for up to 2 weeks. For long term storage store at -20°C in small aliquots to prevent freeze-thaw cycles.
Note	For research use only
Clonality	Polyclonal
Source	Rabbit
Uniprot ID	P17919 , P14653 , Q01822 , P49639 , Q9GZZ0 , P09022
Entrez	3231 , 3211 , 3198 , 15407
Dilution Range	WB (1/500 - 1/1000), IH (1/50 - 1/200)
Expiration Date	12 months from date of receipt.



Western blot analysis of HOXA1/B1/D1 exp...



Immunohistochemical analysis of HOXA1/B1...