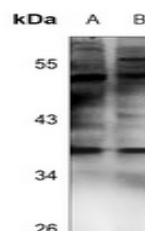


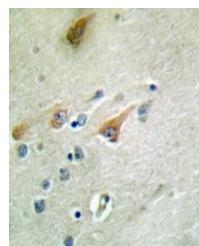
Product Datasheet

NT5C3 antibody (orb1474728)

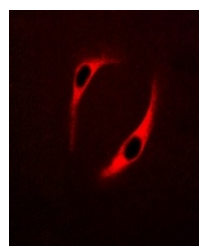
Description	Rabbit polyclonal antibody to NT5C3
Species/Host	Rabbit
Reactivity	Human
Conjugation	Unconjugated
Tested Applications	IF, IH, WB
Immunogen	KLH-conjugated synthetic peptide encompassing a sequence within the N-term region of human NT5C3. The exact sequence is proprietary.
Target	NT5C3
Preservatives	Liquid in 0.42% Potassium phosphate, 0.87% Sodium chloride, pH 7.3, 30% glycerol, and 0.01% sodium azide.
Form/Appearance	Liquid in 0.42% Potassium phosphate, 0.87% Sodium chloride, pH 7.3, 30% glycerol, and 0.01% sodium azide.
Storage	Maintain refrigerated at 2-8°C for up to 2 weeks. For long term storage store at -20°C in small aliquots to prevent freeze-thaw cycles.
Note	For research use only
Clonality	Polyclonal
Source	Rabbit
Uniprot ID	Q9H0P0
Entrez	51251
Dilution Range	WB (1/500 - 1/1000), IH (1/50 - 1/200), IF/IC (1/50 - 1/200)
Expiration Date	12 months from date of receipt.



Western blot analysis of NT5C3 expressio...



Immunohistochemical analysis of NT5C3 st...



Immunofluorescent analysis of NT5C3 stai...