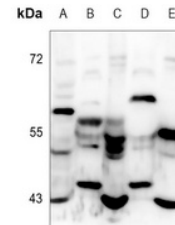


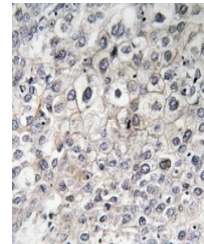
Product Datasheet

CCR10 antibody (orb1474664)

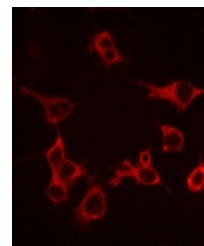
Description	Rabbit polyclonal antibody to CCR10
Species/Host	Rabbit
Reactivity	Human, Mouse, Rat
Conjugation	Unconjugated
Tested Applications	IF, IH, WB
Immunogen	KLH-conjugated synthetic peptide encompassing a sequence within the C-term region of human CCR10. The exact sequence is proprietary.
Target	CCBP2
Preservatives	Liquid in 0.42% Potassium phosphate, 0.87% Sodium chloride, pH 7.3, 30% glycerol, and 0.01% sodium azide.
Form/Appearance	Liquid in 0.42% Potassium phosphate, 0.87% Sodium chloride, pH 7.3, 30% glycerol, and 0.01% sodium azide.
Storage	Maintain refrigerated at 2-8°C for up to 2 weeks. For long term storage store at -20°C in small aliquots to prevent freeze-thaw cycles.
Note	For research use only
Clonality	Polyclonal
Source	Rabbit
Uniprot ID	O09027 , O00590 , O08707
Entrez	59289 , 1238
Dilution Range	WB (1/500 - 1/1000), IH (1/50 - 1/200), IF/IC (1/50 - 1/200)
Expiration Date	12 months from date of receipt.



Western blot analysis of CCR10 expressio...



Immunohistochemical analysis of CCR10 st...



Immunofluorescent analysis of CCR10 stai...