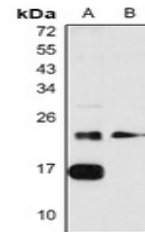


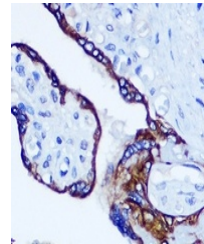
Product Datasheet

RhoA antibody (orb1474647)

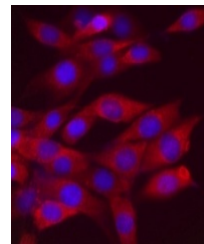
Description	Rabbit polyclonal antibody to RhoA
Species/Host	Rabbit
Reactivity	Human, Mouse, Rat
Conjugation	Unconjugated
Tested Applications	IF, IH, WB
Immunogen	KLH-conjugated synthetic peptide encompassing a sequence within the C-term region of human RhoA. The exact sequence is proprietary.
Target	RHOA
Preservatives	Liquid in 0.42% Potassium phosphate, 0.87% Sodium chloride, pH 7.3, 30% glycerol, and 0.01% sodium azide.
Form/Appearance	Liquid in 0.42% Potassium phosphate, 0.87% Sodium chloride, pH 7.3, 30% glycerol, and 0.01% sodium azide.
Storage	Shipped at 4°C. Upon delivery aliquot and store at -20°C for one year. Avoid freeze/thaw cycles.
Note	For research use only
Clonality	Polyclonal
Source	Rabbit
Uniprot ID	P61586 , Q9QUI0 , P61589
Entrez	387 , 11848 , 117273
Dilution Range	WB (1/500 - 1/1000), IH (1/50 - 1/200), IF/IC (1/50 - 1/200)
Expiration Date	12 months from date of receipt.



Western blot analysis of RhoA expression...



Immunohistochemical analysis of RhoA staining...



Immunofluorescent analysis of RhoA staining...