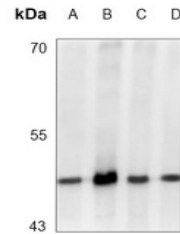


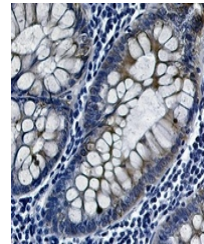
## Product Datasheet

### GSK3 beta (phospho-S9) antibody (orb1474580)

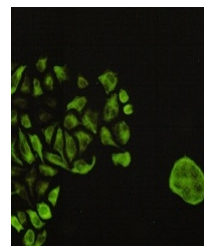
<b>Description</b>	Rabbit monoclonal antibody to GSK3 beta (phospho-S9)
<b>Species/Host</b>	Rabbit
<b>Reactivity</b>	Human, Mouse, Rat
<b>Conjugation</b>	Unconjugated
<b>Tested Applications</b>	IF, IH, WB
<b>Immunogen</b>	KLH-conjugated synthetic phosphopeptide corresponding to residues surrounding S9 of human GSK3 beta protein. The exact sequence is proprietary.
<b>Target</b>	GSK3B
<b>Preservatives</b>	Liquid in 50mM Tris-Glycine (pH 7.4), 0.15M NaCl, 50% Glycerol, 0.01% Sodium azide and 0.05% rAlbumin.
<b>Form/Appearance</b>	Liquid in 50mM Tris-Glycine (pH 7.4), 0.15M NaCl, 50% Glycerol, 0.01% Sodium azide and 0.05% rAlbumin.
<b>Storage</b>	Shipped at 4°C. Upon delivery aliquot and store at -20°C for one year. Avoid freeze/thaw cycles.
<b>Note</b>	For research use only
<b>Clonality</b>	Monoclonal
<b>Source</b>	Rabbit
<b>Uniprot ID</b>	<b>P49841, P18266, Q9WV60</b>
<b>Entrez</b>	<b>84027, 2932, 56637</b>
<b>Dilution Range</b>	WB (1/500 - 1/1000), IH (1/50 - 1/100), IF/IC (1/50 - 1/100)
<b>Expiration Date</b>	12 months from date of receipt.



Western blot analysis of GSK3 beta (Phos...



Immunohistochemical analysis of GSK3 beta...



Immunofluorescent analysis of GSK3 beta ...