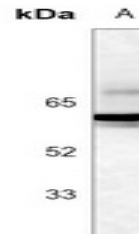


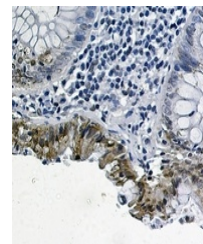
Product Datasheet

SMAD2 (phospho-S255) antibody (orb1474578)

Description	Rabbit monoclonal antibody to SMAD2 (phospho-S255)
Species/Host	Rabbit
Reactivity	Human
Conjugation	Unconjugated
Tested Applications	IH, IP, WB
Immunogen	KLH-conjugated synthetic phosphopeptide corresponding to residues surrounding S255 of human SMAD2 protein. The exact sequence is proprietary.
Target	SMAD2
Preservatives	Liquid in 50mM Tris-Glycine (pH 7.4), 0.15M NaCl, 50% Glycerol, 0.01% Sodium azide and 0.05% rAlbumin.
Form/Appearance	Liquid in 50mM Tris-Glycine (pH 7.4), 0.15M NaCl, 50% Glycerol, 0.01% Sodium azide and 0.05% rAlbumin.
Storage	Maintain refrigerated at 2-8°C for up to 2 weeks. For long term storage store at -20°C in small aliquots to prevent freeze-thaw cycles.
Note	For research use only
Clonality	Monoclonal
Source	Rabbit
Uniprot ID	Q15796
Entrez	4087
Dilution Range	WB (1/500 - 1/1000), IH (1/50 - 1/100), IP (1/10 - 1/50)
Expiration Date	12 months from date of receipt.



Western blot analysis of SMAD2 (Phospho-S255)



Immunohistochemical analysis of SMAD2 (Phospho-S255)