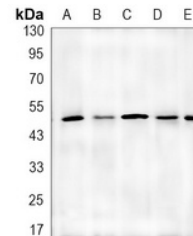


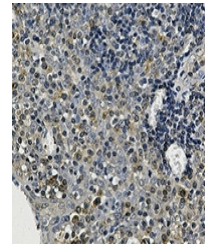
Product Datasheet

Alpha-tubulin 4a antibody (orb1474567)

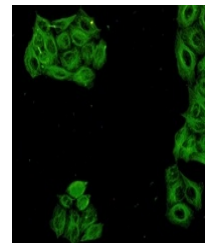
Description	Rabbit monoclonal antibody to Alpha-tubulin 4a
Species/Host	Rabbit
Reactivity	Hamster, Human, Mouse, Rat
Conjugation	Unconjugated
Tested Applications	IF, IH, IP, WB
Immunogen	A synthetic peptide of human alpha Tubulin
Target	TUBA4A
Preservatives	Liquid in 50mM Tris-Glycine (pH 7.4), 0.15M NaCl, 50% Glycerol, 0.01% Sodium azide and 0.05% rAlbumin.
Form/Appearance	Liquid in 50mM Tris-Glycine (pH 7.4), 0.15M NaCl, 50% Glycerol, 0.01% Sodium azide and 0.05% rAlbumin.
Storage	Maintain refrigerated at 2-8°C for up to 2 weeks. For long term storage store at -20°C in small aliquots to prevent freeze-thaw cycles.
Note	For research use only
Clonality	Monoclonal
Source	Rabbit
Uniprot ID	P68366 , P68368 , Q5XIF6
Entrez	22145 , 7277 , 316531
Dilution Range	WB (1/500 - 1/1000), IH (1/50 - 1/100), IF/IC (1/50 - 1/100), IP (1/10 - 1/50)
Expiration Date	12 months from date of receipt.



Western blot analysis of Alpha-tubulin 4...



Immunohistochemical analysis of Alpha-tu...



Immunofluorescent analysis of Alpha-tubu...