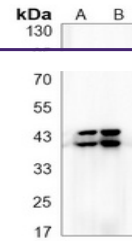

Product Datasheet

**ERK1/2 (phospho-T202/Y204) antibody
(orb1474542)**

Description

Rabbit monoclonal antibody to ERK1/2 (phospho-



Western blot analysis of ERK1/2 (Phospho...

Species/Host

Rabbit

Reactivity

Human, Rat

Conjugation

Unconjugated

Tested Applications

IP, WB

Immunogen

KLH-conjugated synthetic phosphopeptide corresponding to residues surrounding T202/Y204 of human ERK1/2 protein. The exact sequence is proprietary.

Target

MAPK1; MAPK3

Preservatives

Liquid in 50mM Tris-Glycine (pH 7.4), 0.15M NaCl, 50% Glycerol, 0.01% Sodium azide and 0.05% rAlbumin.

Form/Appearance

Liquid in 50mM Tris-Glycine (pH 7.4), 0.15M NaCl, 50% Glycerol, 0.01% Sodium azide and 0.05% rAlbumin.

Storage

Maintain refrigerated at 2-8°C for up to 2 weeks. For long term storage store at -20°C in small aliquots to prevent freeze-thaw cycles.

Note

For research use only

Clonality

Monoclonal

Source

Rabbit

Uniprot ID
[P27361](#), [P28482](#), [P63086](#), [P21708](#)
Entrez
[5594](#), [50689](#), [116590](#), [5595](#)
Dilution Range

WB (1/500 - 1/1000), IP (1/10 - 1/50)

Expiration Date

12 months from date of receipt.