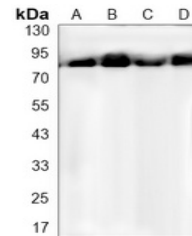


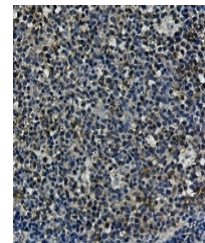
## Product Datasheet

### HSP90 alpha/beta antibody (orb1474524)

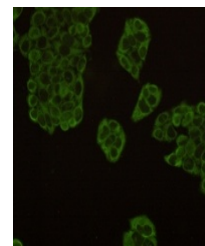
<b>Description</b>	Rabbit monoclonal antibody to HSP90 alpha/beta
<b>Species/Host</b>	Rabbit
<b>Reactivity</b>	Human, Mouse, Rat
<b>Conjugation</b>	Unconjugated
<b>Tested Applications</b>	IF, IH, IP, WB
<b>Immunogen</b>	Recombinant protein of human Hsp90 beta
<b>Target</b>	HSP90AA1; HSP90AB1
<b>Preservatives</b>	Liquid in 50mM Tris-Glycine (pH 7.4), 0.15M NaCl, 50% Glycerol, 0.01% Sodium azide and 0.05% rAlbumin.
<b>Form/Appearance</b>	Liquid in 50mM Tris-Glycine (pH 7.4), 0.15M NaCl, 50% Glycerol, 0.01% Sodium azide and 0.05% rAlbumin.
<b>Storage</b>	Shipped at 4°C. Upon delivery aliquot and store at -20°C for one year. Avoid freeze/thaw cycles.
<b>Note</b>	For research use only
<b>Clonality</b>	Monoclonal
<b>Source</b>	Rabbit
<b>Uniprot ID</b>	<a href="#">P07901</a> , <a href="#">P82995</a> , <a href="#">P34058</a> , <a href="#">P11499</a> , <a href="#">P07900</a> , <a href="#">P08238</a>
<b>Entrez</b>	<a href="#">3326</a> , <a href="#">15516</a> , <a href="#">3320</a> , <a href="#">15519</a> , <a href="#">301252</a> , <a href="#">299331</a>
<b>Dilution Range</b>	WB (1/500 - 1/1000), IH (1/50 - 1/100), IF/IC (1/50 - 1/100), IP (1/10 - 1/50)
<b>Expiration Date</b>	12 months from date of receipt.



Western blot analysis of HSP90 alpha/bet...



Immunohistochemical analysis of HSP90 al...



Immunofluorescent analysis of HSP90 alph...