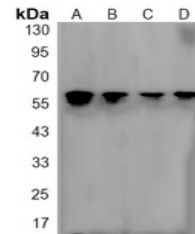


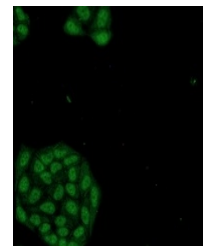
Product Datasheet

NR1D1 antibody (orb1474512)

Description	Rabbit monoclonal antibody to NR1D1
Species/Host	Rabbit
Reactivity	Human, Mouse, Rat
Conjugation	Unconjugated
Tested Applications	IF, WB
Immunogen	A synthetic peptide of human NR1D1
Target	NR1D1
Preservatives	Liquid in 50mM Tris-Glycine (pH 7.4), 0.15M NaCl, 50% Glycerol, 0.01% Sodium azide and 0.05% rAlbumin.
Form/Appearance	Liquid in 50mM Tris-Glycine (pH 7.4), 0.15M NaCl, 50% Glycerol, 0.01% Sodium azide and 0.05% rAlbumin.
Storage	Maintain refrigerated at 2-8°C for up to 2 weeks. For long term storage store at -20°C in small aliquots to prevent freeze-thaw cycles.
Note	For research use only
Clonality	Monoclonal
Source	Rabbit
Uniprot ID	Q63503 , P20393 , Q3UV55
Entrez	217166 , 252917 , 9572
Dilution Range	WB (1/500 - 1/1000), IF/IC (1/50 - 1/100)
Expiration Date	12 months from date of receipt.



Western blot analysis of NR1D1 expression...



Immunofluorescent analysis of NR1D1 staining...