

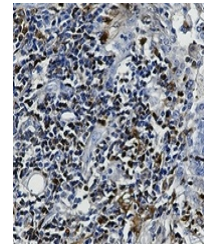
Product Datasheet

S100-A4 antibody (orb1474497)

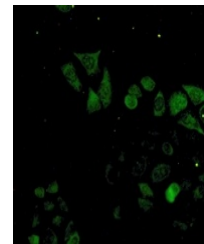
Description	Rabbit monoclonal antibody to S100-A4
Species/Host	Rabbit
Reactivity	Human
Conjugation	Unconjugated
Tested Applications	IF, IH, IP, WB
Immunogen	A synthetic peptide of human S100A4
Target	S100A4
Preservatives	Liquid in 50mM Tris-Glycine (pH 7.4), 0.15M NaCl, 50% Glycerol, 0.01% Sodium azide and 0.05% rAlbumin.
Form/Appearance	Liquid in 50mM Tris-Glycine (pH 7.4), 0.15M NaCl, 50% Glycerol, 0.01% Sodium azide and 0.05% rAlbumin.
Storage	Shipped at 4°C. Upon delivery aliquot and store at -20°C for one year. Avoid freeze/thaw cycles.
Note	For research use only
Clonality	Monoclonal
Source	Rabbit
Uniprot ID	P26447
Entrez	6275
Dilution Range	WB (1/500 - 1/1000), IH (1/50 - 1/100), IF/IC (1/50 - 1/100), IP (1/10 - 1/50)
Expiration Date	12 months from date of receipt.



Western blot analysis of S100-A4 express...



Immunohistochemical analysis of S100-A4



Immunofluorescent analysis of S100-A4 st...