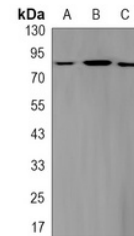


Product Datasheet

STAT3 (phospho-S727) antibody (orb1474494)

Description	Rabbit monoclonal antibody to STAT3 (phospho-S727)
Species/Host	Rabbit
Reactivity	Human, Rat
Conjugation	Unconjugated
Tested Applications	IF, WB
Immunogen	KLH-conjugated synthetic phosphopeptide corresponding to residues surrounding S727 of human STAT3 protein. The exact sequence is proprietary.
Target	STAT3
Preservatives	Liquid in 50mM Tris-Glycine (pH 7.4), 0.15M NaCl, 50% Glycerol, 0.01% Sodium azide and 0.05% rAlbumin.
Form/Appearance	Liquid in 50mM Tris-Glycine (pH 7.4), 0.15M NaCl, 50% Glycerol, 0.01% Sodium azide and 0.05% rAlbumin.
Storage	Maintain refrigerated at 2-8°C for up to 2 weeks. For long term storage store at -20°C in small aliquots to prevent freeze-thaw cycles.
Note	For research use only
Clonality	Monoclonal
Source	Rabbit
Uniprot ID	P40763, P52631
Entrez	25125, 6774
Dilution Range	WB (1/500 - 1/1000), IF/IC (1/50 - 1/100)
Expiration Date	12 months from date of receipt.



Western blot analysis of STAT3 (Phospho-...