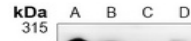

Product Datasheet

Filamin A/B (phospho-S2152/2107) antibody (orb1474464)

Description

Rabbit monoclonal antibody to Filamin A/B


Species/Host

Rabbit

Reactivity

Human, Rat

Conjugation

Unconjugated

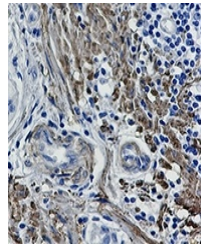
Tested Applications

IF, IH, WB

Western blot analysis of Filamin A/B (Ph...

Immunogen

KLH-conjugated synthetic phosphopeptide corresponding to residues surrounding S2152/2107 of human Filamin A/B protein. The exact sequence is proprietary.



Immunohistochemical analysis of Filamin ...

Target

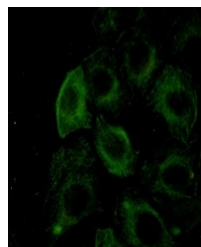
FLNB

Preservatives

Liquid in 50mM Tris-Glycine (pH 7.4), 0.15M NaCl, 50% Glycerol, 0.01% Sodium azide and 0.05% rAlbumin.

Form/Appearance

Liquid in 50mM Tris-Glycine (pH 7.4), 0.15M NaCl, 50% Glycerol, 0.01% Sodium azide and 0.05% rAlbumin.



Immunofluorescent analysis of Filamin A/...

Storage

Maintain refrigerated at 2-8°C for up to 2 weeks. For long term storage store at -20°C in small aliquots to prevent freeze-thaw cycles.

Note

For research use only

Clonality

Monoclonal

Source

Rabbit

Uniprot ID
[075369](#)
Entrez
[2317](#)
Dilution Range

WB (1/500 - 1/1000), IH (1/50 - 1/100), IF/IC (1/50 - 1/100)

Expiration Date

12 months from date of receipt.