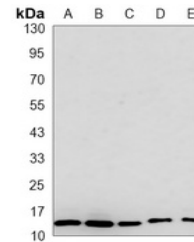


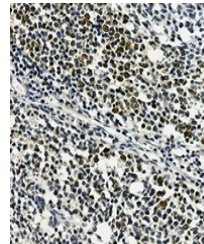
## Product Datasheet

### RPS20 antibody (orb1474428)

<b>Description</b>	Rabbit monoclonal antibody to RPS20
<b>Species/Host</b>	Rabbit
<b>Reactivity</b>	Hamster, Human, Mouse, Rat
<b>Conjugation</b>	Unconjugated
<b>Tested Applications</b>	IH, WB
<b>Immunogen</b>	A synthetic peptide of human RPS20
<b>Target</b>	RPS20
<b>Preservatives</b>	Liquid in 50mM Tris-Glycine (pH 7.4), 0.15M NaCl, 50% Glycerol, 0.01% Sodium azide and 0.05% rAlbumin.
<b>Form/Appearance</b>	Liquid in 50mM Tris-Glycine (pH 7.4), 0.15M NaCl, 50% Glycerol, 0.01% Sodium azide and 0.05% rAlbumin.
<b>Storage</b>	Maintain refrigerated at 2-8°C for up to 2 weeks. For long term storage store at -20°C in small aliquots to prevent freeze-thaw cycles.
<b>Note</b>	For research use only
<b>Clonality</b>	Monoclonal
<b>Source</b>	Rabbit
<b>Uniprot ID</b>	<a href="#">P60867</a> , <a href="#">P60866</a> , <a href="#">P60868</a>
<b>Entrez</b>	<a href="#">6224</a> , <a href="#">100362684</a> , <a href="#">100362149</a> , <a href="#">100359951</a> , <a href="#">67427</a> , <a href="#">122772</a>
<b>Dilution Range</b>	WB (1/500 - 1/1000), IH (1/50 - 1/100)
<b>Expiration Date</b>	12 months from date of receipt.



Western blot analysis of RPS20 expressio...



Immunohistochemical analysis of RPS20 st...