

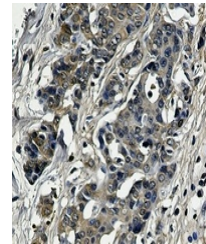
Product Datasheet

SOD1 antibody (orb1474422)

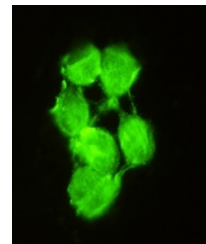
Description	Rabbit monoclonal antibody to SOD1
Species/Host	Rabbit
Reactivity	Human, Rat
Conjugation	Unconjugated
Tested Applications	IF, IH, WB
Immunogen	A synthetic peptide of human Superoxide Dismutase 1
Target	SOD1
Preservatives	Liquid in 50mM Tris-Glycine (pH 7.4), 0.15M NaCl, 50% Glycerol, 0.01% Sodium azide and 0.05% rAlbumin.
Form/Appearance	Liquid in 50mM Tris-Glycine (pH 7.4), 0.15M NaCl, 50% Glycerol, 0.01% Sodium azide and 0.05% rAlbumin.
Storage	Maintain refrigerated at 2-8°C for up to 2 weeks. For long term storage store at -20°C in small aliquots to prevent freeze-thaw cycles.
Note	For research use only
Clonality	Monoclonal
Source	Rabbit
Uniprot ID	P00441, P07632
Entrez	24786, 6647
Dilution Range	WB (1/500 - 1/1000), IH (1/50 - 1/100), IF/IC (1/50 - 1/100)
Expiration Date	12 months from date of receipt.



Western blot analysis of SOD1 expression...



Immunohistochemical analysis of SOD1 sta...



Immunofluorescent analysis of SOD1 stain...