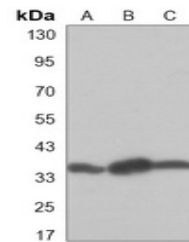


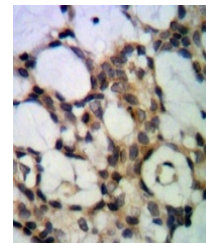
## Product Datasheet

### PP1 alpha antibody (orb1474394)

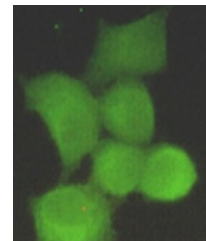
<b>Description</b>	Mouse monoclonal antibody to PP1 alpha
<b>Species/Host</b>	Mouse
<b>Reactivity</b>	Human
<b>Conjugation</b>	Unconjugated
<b>Tested Applications</b>	IF, IH, WB
<b>Immunogen</b>	Purified recombinant human PPP1A protein fragments expressed in E.coli.
<b>Target</b>	PPP1CA
<b>Preservatives</b>	Liquid in PBS containing 50% glycerol, 0.5% rAlbumin and 0.02% sodium azide, pH 7.3.
<b>Form/Appearance</b>	Liquid in PBS containing 50% glycerol, 0.5% rAlbumin and 0.02% sodium azide, pH 7.3.
<b>Storage</b>	Shipped at 4°C. Upon delivery aliquot and store at -20°C for one year. Avoid freeze/thaw cycles.
<b>Note</b>	For research use only
<b>Clonality</b>	Monoclonal
<b>Source</b>	Mouse
<b>Uniprot ID</b>	<a href="#">P62136</a>
<b>Entrez</b>	<a href="#">5499</a>
<b>Dilution Range</b>	WB (1/500 - 1/1000), IH (1/50 - 1/100), IF/IC (1/50 - 1/100)
<b>Expiration Date</b>	12 months from date of receipt.



Western blot analysis of PP1 alpha expression.



Immunohistochemical analysis of PP1 alpha expression.



Immunofluorescent analysis of PP1 alpha expression.