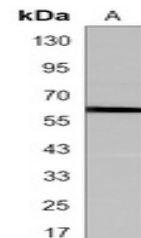


Product Datasheet

SMYD1 antibody (orb1474392)

Description	Mouse monoclonal antibody to SMYD1
Species/Host	Mouse
Reactivity	Rat
Conjugation	Unconjugated
Tested Applications	WB
Immunogen	Purified recombinant human SMYD1 protein fragments expressed in E.coli.
Target	SMYD1
Preservatives	Liquid in PBS containing 50% glycerol, 0.5% rAlbumin and 0.02% sodium azide, pH 7.3.
Form/Appearance	Liquid in PBS containing 50% glycerol, 0.5% rAlbumin and 0.02% sodium azide, pH 7.3.
Storage	Shipped at 4°C. Upon delivery aliquot and store at -20°C for one year. Avoid freeze/thaw cycles.
Note	For research use only
Clonality	Monoclonal
Source	Mouse
Uniprot ID	D4A3D2
Entrez	297333
Dilution Range	WB (1/500 - 1/1000)
Expiration Date	12 months from date of receipt.



Western blot analysis of SMYD1 expression...