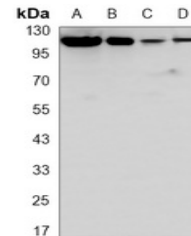


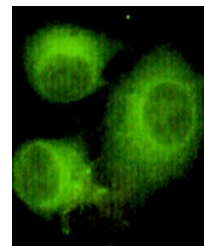
## Product Datasheet

### ACLY antibody (orb1474379)

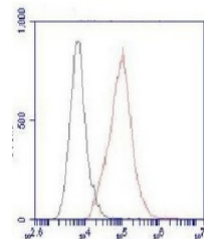
<b>Description</b>	Mouse monoclonal antibody to ACLY
<b>Species/Host</b>	Mouse
<b>Reactivity</b>	Human, Mouse, Primate
<b>Conjugation</b>	Unconjugated
<b>Tested Applications</b>	FC, IF, WB
<b>Immunogen</b>	Purified recombinant human ATP-Citrate Lyase protein fragments expressed in E.coli.
<b>Target</b>	ACLY
<b>Preservatives</b>	Liquid in PBS containing 50% glycerol, 0.5% rAlbumin and 0.02% sodium azide, pH 7.3.
<b>Form/Appearance</b>	Liquid in PBS containing 50% glycerol, 0.5% rAlbumin and 0.02% sodium azide, pH 7.3.
<b>Storage</b>	Maintain refrigerated at 2-8°C for up to 2 weeks. For long term storage store at -20°C in small aliquots to prevent freeze-thaw cycles.
<b>Note</b>	For research use only
<b>Clonality</b>	Monoclonal
<b>Source</b>	Mouse
<b>Uniprot ID</b>	<a href="#">Q91V92</a> , <a href="#">P53396</a>
<b>Entrez</b>	<a href="#">47</a> , <a href="#">104112</a>
<b>Dilution Range</b>	WB (1/500 - 1/1000), IF/IC (1/50 - 1/100), FC (1/50 - 1/100)
<b>Expiration Date</b>	12 months from date of receipt.



Western blot analysis of ACLY expression...



Immunofluorescent analysis of ACLY stain...



Flow cytometric analysis of ACLY in HeLa...