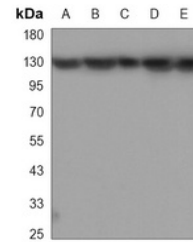


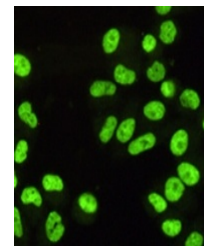
Product Datasheet

SAF-B1 antibody (orb1474358)

Description	Mouse monoclonal antibody to SAF-B1
Species/Host	Mouse
Reactivity	Human
Conjugation	Unconjugated
Tested Applications	ChIP, IF, WB
Immunogen	Purified recombinant human SAFB1 protein fragments expressed in E.coli.
Target	SAFB
Preservatives	Liquid in PBS containing 50% glycerol, 0.5% rAlbumin and 0.02% sodium azide, pH 7.3.
Form/Appearance	Liquid in PBS containing 50% glycerol, 0.5% rAlbumin and 0.02% sodium azide, pH 7.3.
Storage	Maintain refrigerated at 2-8°C for up to 2 weeks. For long term storage store at -20°C in small aliquots to prevent freeze-thaw cycles.
Note	For research use only
Clonality	Monoclonal
Source	Mouse
Uniprot ID	Q15424
Entrez	6294
Dilution Range	WB (1/500 - 1/1000), IF/IC (1/50 - 1/100), ChIP (1/10 - 1/50)
Expiration Date	12 months from date of receipt.



Western blot analysis of SAF-B1 expressi...



Immunofluorescent analysis of SAF-B1 sta...