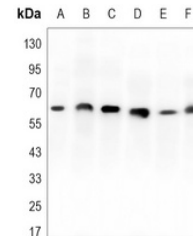


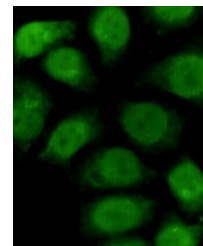
Product Datasheet

RPA1 antibody (orb1474312)

Description	Mouse monoclonal antibody to RPA1
Species/Host	Mouse
Reactivity	Human, Mouse, Primate, Rat
Conjugation	Unconjugated
Tested Applications	IF, IP, WB
Immunogen	Purified recombinant human RPA70 protein fragments expressed in E.coli.
Target	RPA1
Preservatives	Liquid in PBS containing 50% glycerol, 0.5% rAlbumin and 0.02% sodium azide, pH 7.3.
Form/Appearance	Liquid in PBS containing 50% glycerol, 0.5% rAlbumin and 0.02% sodium azide, pH 7.3.
Storage	Maintain refrigerated at 2-8°C for up to 2 weeks. For long term storage store at -20°C in small aliquots to prevent freeze-thaw cycles.
Note	For research use only
Clonality	Monoclonal
Source	Mouse
Uniprot ID	P27694 , Q8VEE4
Entrez	6117 , 68275
Dilution Range	WB (1/500 - 1/1000), IF/IC (1/50 - 1/100), IP (1/10 - 1/50)
Expiration Date	12 months from date of receipt.



Western blot analysis of RPA1 expression...



Immunofluorescent analysis of RPA1 stain...