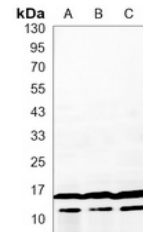


## Product Datasheet

### LC3A/B antibody (orb1474259)

<b>Description</b>	Mouse monoclonal antibody to LC3A/B
<b>Species/Host</b>	Mouse
<b>Reactivity</b>	Human, Rat
<b>Conjugation</b>	Unconjugated
<b>Tested Applications</b>	WB
<b>Immunogen</b>	Synthetic peptide corresponding to human LC3B protein
<b>Target</b>	MAP1LC3A; MAP1LC3B
<b>Preservatives</b>	Liquid in PBS containing 50% glycerol, 0.5% rAlbumin and 0.02% sodium azide, pH 7.3.
<b>Form/Appearance</b>	Liquid in PBS containing 50% glycerol, 0.5% rAlbumin and 0.02% sodium azide, pH 7.3.
<b>Storage</b>	Maintain refrigerated at 2-8°C for up to 2 weeks. For long term storage store at -20°C in small aliquots to prevent freeze-thaw cycles.
<b>Note</b>	For research use only
<b>Clonality</b>	Monoclonal
<b>Source</b>	Mouse
<b>Uniprot ID</b>	<a href="#">Q9GZQ8</a> , <a href="#">Q62625</a> , <a href="#">Q9H492</a> , <a href="#">Q6XVN8</a>
<b>Entrez</b>	<a href="#">362245</a> , <a href="#">64862</a> , <a href="#">81631</a> , <a href="#">84557</a>
<b>Dilution Range</b>	WB (1/500 - 1/1000)
<b>Expiration Date</b>	12 months from date of receipt.



Western blot analysis of LC3A/B expressi...