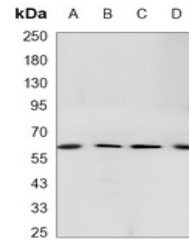


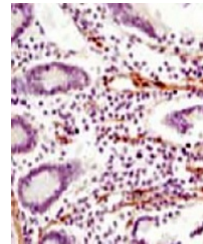
Product Datasheet

LPP antibody (orb1474252)

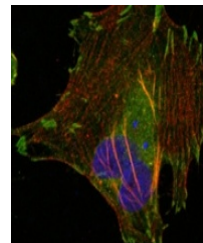
Description	Mouse monoclonal antibody to LPP
Species/Host	Mouse
Reactivity	Hamster, Human, Mouse, Primate, Rat
Conjugation	Unconjugated
Tested Applications	IF, IH, IP, WB
Immunogen	Purified recombinant fragment of human LPP expressed in E. Coli.
Target	LPP
Preservatives	Liquid in PBS containing 50% glycerol, 0.5% rAlbumin and 0.02% sodium azide, pH 7.3.
Form/Appearance	Liquid in PBS containing 50% glycerol, 0.5% rAlbumin and 0.02% sodium azide, pH 7.3.
Storage	Maintain refrigerated at 2-8°C for up to 2 weeks. For long term storage store at -20°C in small aliquots to prevent freeze-thaw cycles.
Note	For research use only
Clonality	Monoclonal
Source	Mouse
Uniprot ID	Q5XI07 , Q93052 , Q8BFW7
Entrez	210126 , 288010 , 4026
Dilution Range	WB (1/500 - 1/1000), IH (1/50 - 1/100), IF/IC (1/50 - 1/100), IP (1/10 - 1/50)
Expiration Date	12 months from date of receipt.



Western blot analysis of LPP expression ...



Immunohistochemical analysis of LPP stai...



Immunofluorescent analysis of LPP staini...