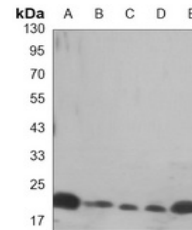


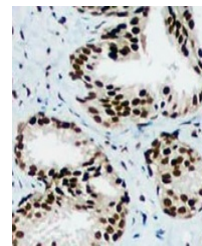
Product Datasheet

HP1 gamma antibody (orb1474234)

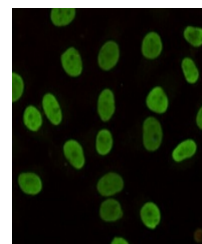
Description	Mouse monoclonal antibody to HP1 gamma
Species/Host	Mouse
Reactivity	Hamster, Human, Mouse, Primate, Rat
Conjugation	Unconjugated
Tested Applications	IF, IH, IP, WB
Immunogen	Purified recombinant human HP1-gamma protein fragments expressed in E.coli.
Target	CBX3
Preservatives	Liquid in PBS containing 50% glycerol, 0.5% rAlbumin and 0.02% sodium azide, pH 7.3.
Form/Appearance	Liquid in PBS containing 50% glycerol, 0.5% rAlbumin and 0.02% sodium azide, pH 7.3.
Storage	Maintain refrigerated at 2-8°C for up to 2 weeks. For long term storage store at -20°C in small aliquots to prevent freeze-thaw cycles.
Note	For research use only
Clonality	Monoclonal
Source	Mouse
Uniprot ID	P23198 , Q13185
Entrez	11335
Dilution Range	WB (1/500 - 1/1000), IH (1/50 - 1/100), IF/IC (1/50 - 1/100), IP (1/10 - 1/50)
Expiration Date	12 months from date of receipt.



Western blot analysis of HP1 gamma expression



Immunohistochemical analysis of HP1 gamma



Immunofluorescent analysis of HP1 gamma