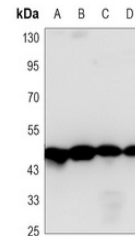


## Product Datasheet

### Gamma-enolase antibody (orb1474187)

|                            |   |
|----------------------------|---|
| <b>Description</b>         | Mouse monoclonal antibody to Gamma-enolase  |
| <b>Species/Host</b>        | Mouse   |
| <b>Reactivity</b>          | Human, Mouse, Rat   |
| <b>Conjugation</b>         | Unconjugated  |
| <b>Tested Applications</b> | ELISA, WB   |
| <b>Immunogen</b>           | Synthetic peptide derived from human NSE.   |
| <b>Target</b>              | ENO2  |
| <b>Preservatives</b>       | Liquid in PBS containing 50% glycerol, 0.5% rAlbumin and 0.02% sodium azide, pH 7.3.  |
| <b>Form/Appearance</b>     | Liquid in PBS containing 50% glycerol, 0.5% rAlbumin and 0.02% sodium azide, pH 7.3.  |
| <b>Storage</b>             | Maintain refrigerated at 2-8°C for up to 2 weeks. For long term storage store at -20°C in small aliquots to prevent freeze-thaw cycles. |
| <b>Note</b>                | For research use only   |
| <b>Clonality</b>           | Monoclonal  |
| <b>Source</b>              | Mouse   |
| <b>Uniprot ID</b>          | <a href="#">P09104</a> , <a href="#">P07323</a> , <a href="#">P17183</a>  |
| <b>Entrez</b>              | <a href="#">24334</a> , <a href="#">13807</a> , <a href="#">100911625</a> , <a href="#">2026</a>  |
| <b>Dilution Range</b>      | WB (1/500 - 1/1000), E (1/5000 - 1/10000)   |
| <b>Expiration Date</b>     | 12 months from date of receipt.   |



Western blot analysis of Gamma-enolase e...