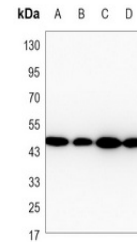


Product Datasheet

Gamma-enolase antibody (orb1474186)

Description	Mouse monoclonal antibody to Gamma-enolase
Species/Host	Mouse
Reactivity	Human, Mouse, Rat
Conjugation	Unconjugated
Tested Applications	ELISA, WB
Immunogen	Synthetic peptide derived from human NSE.
Target	ENO2
Preservatives	Liquid in PBS containing 50% glycerol, 0.5% rAlbumin and 0.02% sodium azide, pH 7.3.
Form/Appearance	Liquid in PBS containing 50% glycerol, 0.5% rAlbumin and 0.02% sodium azide, pH 7.3.
Storage	Maintain refrigerated at 2-8°C for up to 2 weeks. For long term storage store at -20°C in small aliquots to prevent freeze-thaw cycles.
Note	For research use only
Clonality	Monoclonal
Source	Mouse
Uniprot ID	P09104 , P07323 , P17183
Entrez	24334 , 13807 , 100911625 , 2026
Dilution Range	WB (1/500 - 1/1000), E (1/5000 - 1/10000)
Expiration Date	12 months from date of receipt.



Western blot analysis of Gamma-enolase e...