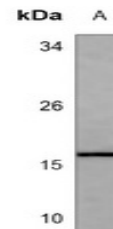


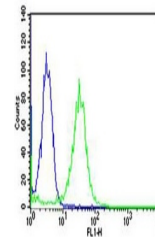
Product Datasheet

MAFK antibody (orb1474148)

Description	Mouse monoclonal antibody to MAFK
Species/Host	Mouse
Reactivity	Human
Conjugation	Unconjugated
Tested Applications	FC, WB
Immunogen	KLH-conjugated synthetic peptide of human MAFK. The exact sequence is proprietary.
Target	MAFK
Preservatives	Mouse IgG1 kappa. Liquid in PBS, pH 7.3, 30% glycerol, and 0.01% sodium azide.
Form/Appearance	Mouse IgG1 kappa. Liquid in PBS, pH 7.3, 30% glycerol, and 0.01% sodium azide.
Storage	Maintain refrigerated at 2-8°C for up to 2 weeks. For long term storage store at -20°C in small aliquots to prevent freeze-thaw cycles.
Note	For research use only
Clonality	Monoclonal
Source	Mouse
Uniprot ID	O60675
Entrez	7975
Dilution Range	WB (1/500 - 1/1000), FC (1/10 - 1/50)
Expiration Date	12 months from date of receipt.



Western blot analysis of MAFK expression...



Flow cytometric analysis of Hela cells u...