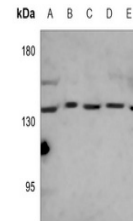


Product Datasheet

Complement C3 antibody (orb1474124)

Description	Mouse monoclonal antibody to Complement C3
Species/Host	Mouse
Reactivity	Human
Conjugation	Unconjugated
Tested Applications	WB
Immunogen	KLH-conjugated synthetic peptide encompassing a sequence within the C-term region of human Complement C3. The exact sequence is proprietary.
Target	C3
Preservatives	Mouse IgG1. Supplied in crude ascites with 0.01% sodium azide.
Form/Appearance	Mouse IgG1. Supplied in crude ascites with 0.01% sodium azide.
Storage	Maintain refrigerated at 2-8°C for up to 2 weeks. For long term storage store at -20°C in small aliquots to prevent freeze-thaw cycles.
Note	For research use only
Clonality	Monoclonal
Source	Mouse
Uniprot ID	P01024
Entrez	718
Dilution Range	WB (1/500 - 1/1000)
Expiration Date	12 months from date of receipt.



Western blot analysis of Complement C3 e...