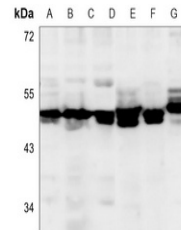


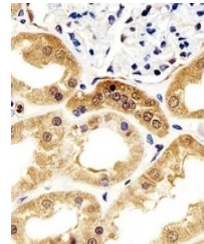
## Product Datasheet

### Alpha-enolase antibody (orb1474064)

<b>Description</b>	Mouse monoclonal antibody to Alpha-enolase
<b>Species/Host</b>	Mouse
<b>Reactivity</b>	Human, Mouse
<b>Conjugation</b>	Unconjugated
<b>Tested Applications</b>	IH, WB
<b>Immunogen</b>	Recombinant fusion protein of human Alpha-enolase. The exact sequence is proprietary.
<b>Target</b>	ENO1
<b>Preservatives</b>	Mouse IgG1 kappa. Liquid in PBS, pH 7.3, 30% glycerol, and 0.01% sodium azide.
<b>Form/Appearance</b>	Mouse IgG1 kappa. Liquid in PBS, pH 7.3, 30% glycerol, and 0.01% sodium azide.
<b>Storage</b>	Maintain refrigerated at 2-8°C for up to 2 weeks. For long term storage store at -20°C in small aliquots to prevent freeze-thaw cycles.
<b>Note</b>	For research use only
<b>Clonality</b>	Monoclonal
<b>Source</b>	Mouse
<b>Uniprot ID</b>	<a href="#">P17182</a> , <a href="#">P06733</a>
<b>Entrez</b>	<a href="#">2023</a> , <a href="#">433182</a> , <a href="#">13806</a>
<b>Dilution Range</b>	WB (1/500 - 1/1000), IH (1/50 - 1/200)
<b>Expiration Date</b>	12 months from date of receipt.



Western blot analysis of Alpha-enolase e...



Immunohistochemical analysis of Alpha-en...