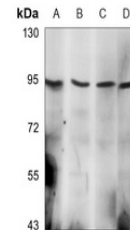


Product Datasheet

HSP90 alpha antibody (orb1474053)

Description	Mouse monoclonal antibody to HSP90 alpha
Species/Host	Mouse
Reactivity	Human, Mouse, Rat
Conjugation	Unconjugated
Tested Applications	WB
Immunogen	KLH-conjugated synthetic peptide encompassing a sequence within the center region of human HSP90 alpha. The exact sequence is proprietary.
Target	HSP90AA1
Preservatives	Mouse IgG1 lambda. Liquid in PBS, pH 7.3, 30% glycerol, and 0.01% sodium azide.
Form/Appearance	Mouse IgG1 lambda. Liquid in PBS, pH 7.3, 30% glycerol, and 0.01% sodium azide.
Storage	Maintain refrigerated at 2-8°C for up to 2 weeks. For long term storage store at -20°C in small aliquots to prevent freeze-thaw cycles.
Note	For research use only
Clonality	Monoclonal
Source	Mouse
Uniprot ID	P07901 , P07900 , P82995
Entrez	299331 , 15519 , 3320
Dilution Range	WB (1/1000 - 1/2000)
Expiration Date	12 months from date of receipt.



Western blot analysis of HSP90 alpha exp...